



This guide is for iOS 10+ iPhone users.



AbiBird®

# How to

## Pair AbiBird Sensor with App and Account

By pairing your AbiBird sensor with your AbiBird app and account, you make it possible for signals to pass from the sensor, via the Cloud, to the AbiBird app on your iPhone.

To pair your AbiBird sensor with your AbiBird app and account, you need to:

1. Switch on sensor
2. Activate Bluetooth on sensor
3. Access 'Let's connect your sensor' page
4. Connect sensor to app
5. Add sensor to AbiBird app account
6. Return sensor to regular 'monitoring' mode and test it



### Step 1 – Switch on sensor

Remove the battery cover at the back of the sensor

Press the **black button** once.

The sensor will beep once to confirm it's ON and in regular monitoring mode.



### Step 2 – Activate Bluetooth on sensor

Press the black button under the battery cover at the back of the sensor. The sensor will turn blue and enter Bluetooth mode.

In this mode, the blue sensor will flash pink when it detects motion.



This guide is for iOS 10+ iPhone users.

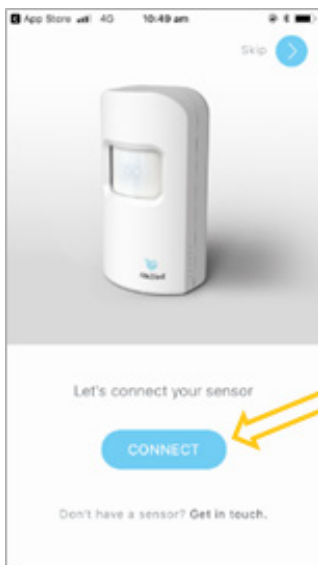


AbiBird®

### Step 3: Access 'Let's connect your sensor' page

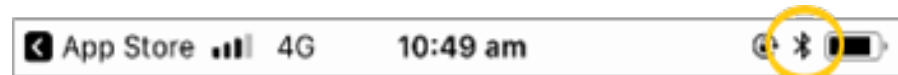
The way you access the *Let's connect your sensor* page will depend on whether you are setting up AbiBird for the first time or pairing an additional sensor.

| If...   | Then...  |
|---|--|
| You are setting up AbiBird for the first time...                                  | The 'Let's connect your sensor' page opens after you have created your AbiBird account. (See guide: <i>How to Download AbiBird and Create AbiBird Account</i> ).<br>[Go to Step 4] |
| You have already set up AbiBird and want to add another sensor to your account... | [Go to guide: <i>How to Add Additional Sensors</i> ]   |



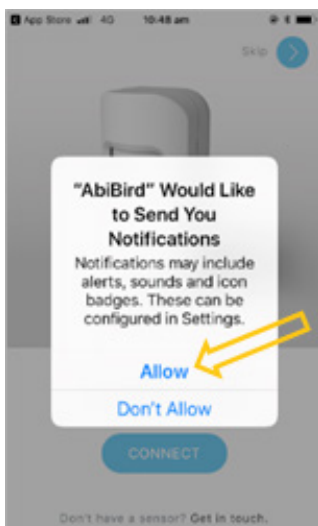
### Step 4: Connect sensor to app

Ensure your iPhone has Bluetooth turned ON (the Bluetooth icon will show at the top right of the iPhone screen, next to the battery icon).



On the Let's connect your sensor page, select **CONNECT** button.

A pop-up message will open.



On the pop-up message, select Allow so that you will receive notifications from AbiBird.

The pop-up will close.



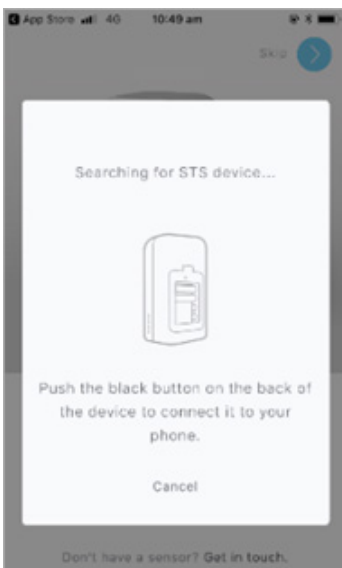
This guide is for iOS 10+ iPhone users.



AbiBird



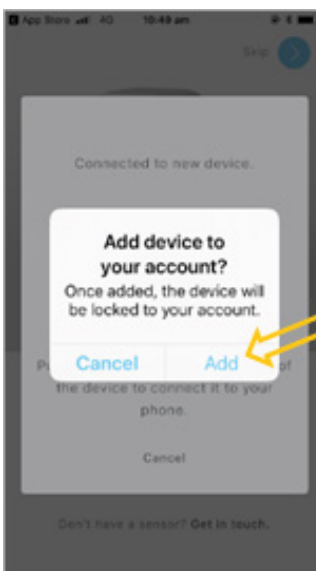
On the *Let's connect your sensor* page, select **CONNECT** button.  
The *Searching for STS device...* message will open.



Wait for the app to connect to the sensor.

NOTE: If the sensor is no longer blue, it means Bluetooth has timed out and the sensor has returned to monitoring mode. (The sensor returns to monitoring mode after 5 minutes). Press the black button again to activate Bluetooth mode. The sensor will light up blue again and connect.

The *Add device to your account?* message will pop-up up.



## Step 5: Add sensor to app account

On the *Add device to your account?* pop-up message, press Add to lock the sensor to your account.

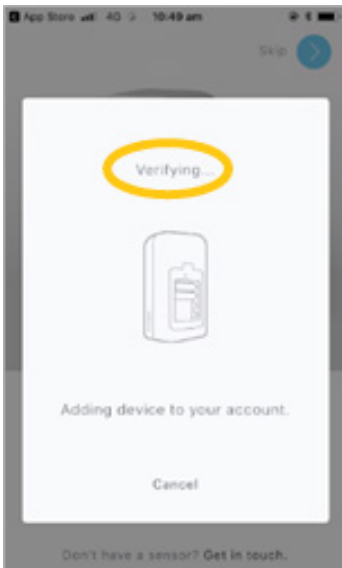
The pop-up will close.



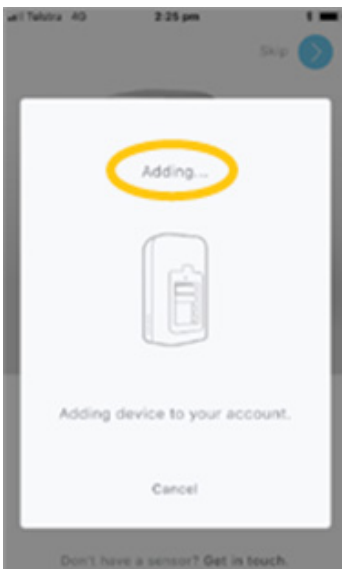
This guide is for iOS 10+ iPhone users.



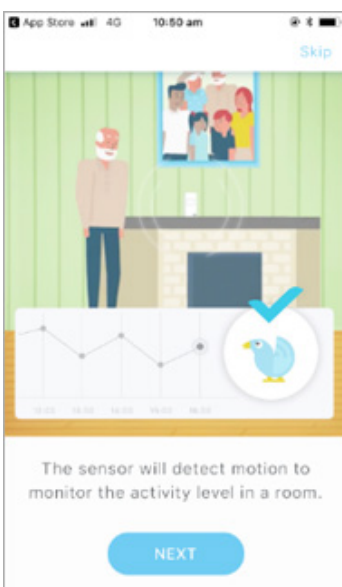
AbiBird



The *Adding device to your account* message opens. Wait while AbiBird verifies your account details...



...and wait while the sensor is added to your AbiBird account. Once the sensor is added to your AbiBird account, a confirmation page will open.



## Step 6: Return sensor to regular 'monitoring' mode and test it



When the confirmation page opens, you can return the sensor to regular 'monitoring' mode, and check it's working.



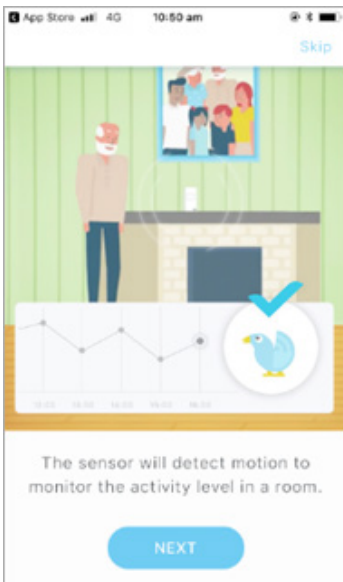
This guide is for iOS 10+ iPhone users.



AbiBird®

|   |   |
|---|---|
| <p>To return the sensor to monitoring mode (Bluetooth OFF):</p> <ul style="list-style-type: none"><li>• Press the black button once again. The blue light will turn off and the sensor will beep twice.</li><li>• Alternatively, just wait – the sensor will return to monitoring mode automatically after 5 minutes.</li></ul> |   |
| <p>To test that your sensor is working in monitoring mode:</p> <ul style="list-style-type: none"><li>• Continuously tap or shake it firmly (up to 10 times to trigger the vibration sensor) until it starts beeping and the light turns red.</li></ul>  |  |

## That's it



Your sensor is paired with your AbiBird app and added to your AbiBird account.

Working in the app, you have:

- Used Bluetooth to connect your sensor with your AbiBird app and account.
- Checked that your sensor is working in monitoring mode.

### NOTE

If you have more than one sensor, you will need to pair each sensor with your AbiBird app and account as detailed above.



This guide is for iOS 10+ iPhone users.



AbiBird®

### Switching OFF Sensor

AbiBird can run for up to 12 months on four standard AA batteries.

However, if you ever do need to turn off the sensor for transport or other reasons, first ensure its Bluetooth is off, then press and hold the **black button** (under the battery cover) until the sensor lights up yellow (approximately 3 seconds).

## Next Step

Your next step is to name the sensor's location and place it in the room it's to monitor.

See the guide: *How to Name Sensor Location and Place in Position.*

## Related Guides

*How to Download AbiBird App and Create AbiBird Account*

*How to Add Additional Sensors*

*How to Name Sensor Location and Place in Position*